



TRINITY COLLEGE FOR WOMEN NAMAKKAL

DEPARTMENT OF COSTUME DESIGN & FASHION

**BOUTIQUE MANAGEMENT
EVEN SEMESTER**

Presented by

Mrs.K.PUNITHA

ASSISTANT PROFESSOR & HEAD

DEPARTMENT OF CDF

<http://www.trinitycollegenkl.edu.in/>

The background is a solid blue color. In the top-right and bottom-left corners, there is a curved, semi-transparent grid pattern that fades into the blue background.

INTERIOR DESIGNING

INTERIOR DESIGNING



INTERIOR DESIGNING

Interior Designing is systematic arrangement of lines, forms, texture, colours etc. to create beauty in interiors.

The OBJECTIVES of Interior Design and Decoration is to create:

- BEAUTY
- EXPRESSIVENESS
- FUNCTIONALITY

BEAUTY

BEAUTY is organization, selection and arrangement of materials into an appealing form. It should be aesthetic and appealing.



EXPRESSIVNESS

Selecting, decorating and furnishing an area to express some definite idea or theme in it. These themes could be naturalness, sophistication, coolness, royalty, formality etc.



FUNCTIONAL

All areas should give the maximum of service, comfort and pleasure for the minimum of care.



BASIC TYPES OF DESIGN

STRUCTURAL DESIGN

It denotes the structure or construction of objects. This is comprised of size, form, colour and texture of an object, be it the object itself, or the drawing of the object worked out on paper.

DECORATIVE DESIGN

This is the surface enrichment of structural design. Any lines, colour, or materials that have been applied to structural design for purpose of adding a richer quality to it constitute its decorative design.

BASIC TYPES OF DESIGN

STRUCTURAL DESIGN



DECORATIVE DESIGN



ELEMENTS OF DESIGN

LINES

In interior decoration combination of the four types of lines is generally seen, each having its own influences.

TYPES OF LINES

- VERTICAL
- HORIZONTAL
- DIAGONAL
- CURVED

VERTICAL LINES

Vertical lines suggest steadfastness, sturdiness, or an upward swing and has masculine effect. In hotels vertical line of doorways, pillars, columns, draperies, and furniture give the strength and height.



HORIZONTAL LINES

Horizontal lines suggest rest, pose, or steadiness. They help to break the affect of vertical lines. In hotels, the horizontal lines of tables, sofas, and other furniture complement the severely vertical lines in other parts of an area.



DIAGONAL LINES

Diagonal line suggests movement and activity and action. Forward – slanting lines suggest push and backward-slanting lines suggest pull. In hotels, diagonal lines appear in staircases and sometimes in curtains, draperies, and wallpaper.



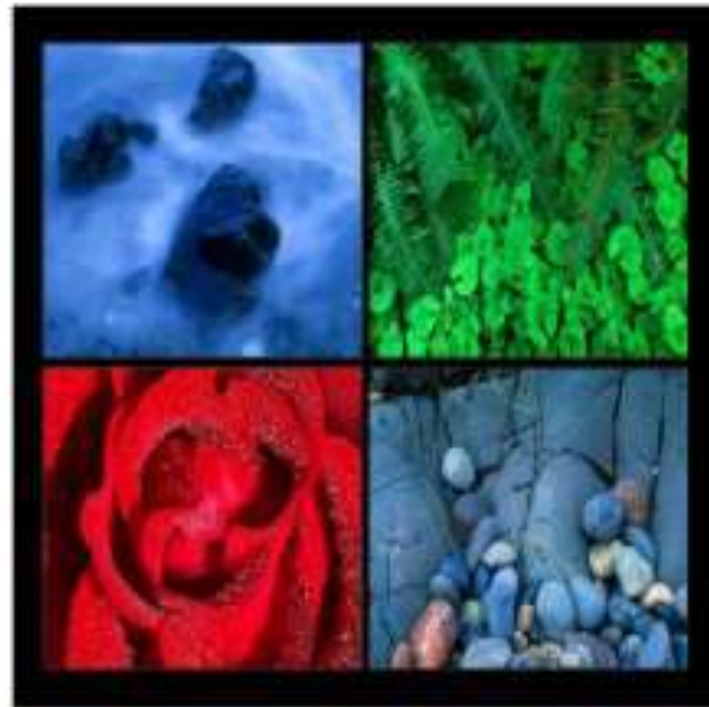
CURVED LINES

Curved lines suggest flexibility, grace and feminine effect. In hotels curved lines are seen in tied back curtains, arches and the graceful curves of furniture.



VISUAL TEXTURE

Visual or illusionary texture may be absolute smooth to touch, but gives impression of texture.



THANK YOU

<http://www.trinitycollegenkl.edu.in/>